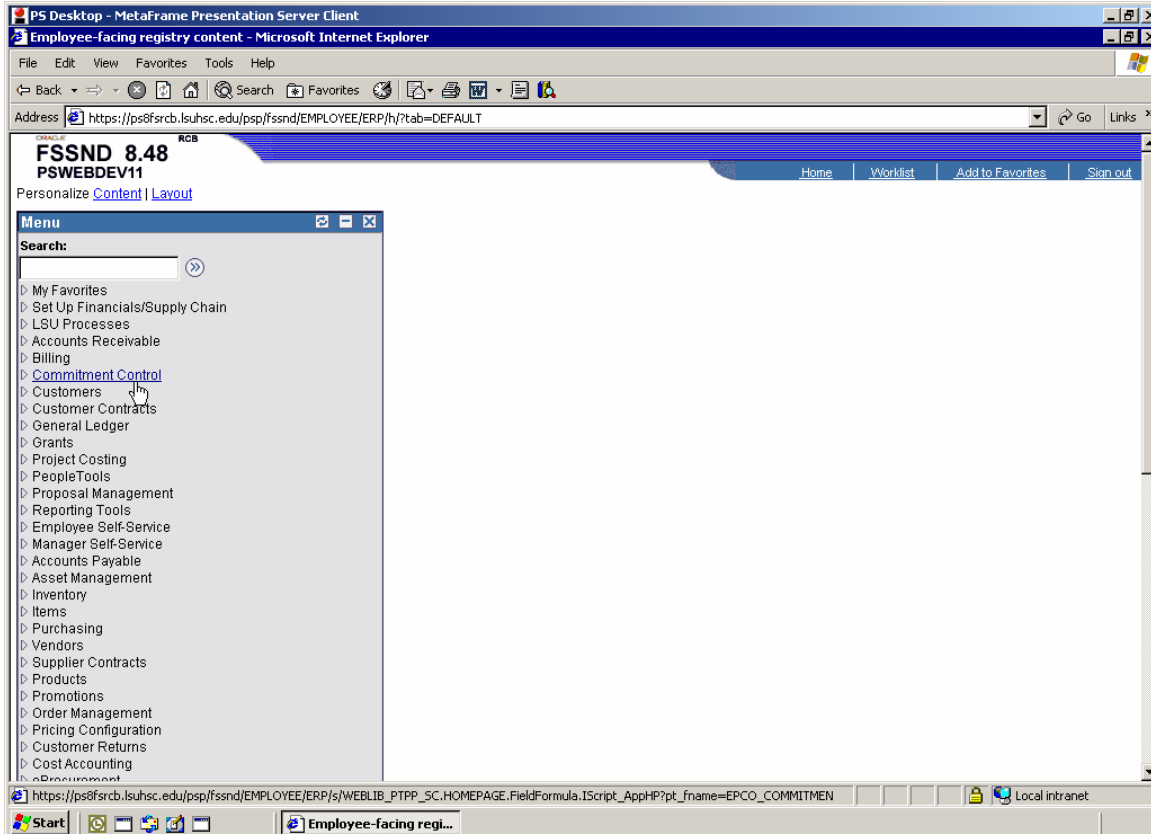


LSU Health Care Services Division

PeopleSoft 8.8

Posting Organization Budget Journals

Select Commitment Control



LSU Health Care Services Division

PeopleSoft 8.8

Posting Organization Budget Journals

Select Budget Journals

The screenshot displays the PeopleSoft 8.8 web interface within a Microsoft Internet Explorer browser window. The browser's address bar shows the URL: https://ps8fsrcb.lsuhscc.edu/psp/fssnd/EMPLOYEE/ERP/s/WEBLIB_PTTP_SC.HOMEPAGE.FieldFormula.IScript_AppHP?pt_fname=EPCO_COMMITMENT_CONTROL&FolderPath=

The main content area is titled "Commitment Control" and includes a description: "Define or maintain budgets, budget-check, and review budgets and exceptions." The interface is organized into a grid of functional areas:

- Define Control Budgets:** Create budget definitions for Commitment Control ledger groups. Sub-links include Budget Definitions, Budget Attributes, and Associated Budgets.
- Define Budget Security:** Activate and configure security events for budget entry, inquiry, and override. Sub-links include Events, Field Setup, and Rule Definitions.
- Budget Journals:** Access Commitment Control budget journals. Sub-links include Enter Budget Journals, Enter Budget Transfer, Mass Delete Budget Journals, and Import Budget Journals.
- Post Control Budget Journals:** Post control budget journals. Sub-links include Request Posting, Mark for Unposting, Request Entry Event Processor, and Budget Ledger Details Report.
- Review Budget Activities:** Review budget activities. Sub-links include Budget Details, Budgets Overview, Ledger Inquiry Set, and Activity Log.
- Close Budget:** Close a budget. Sub-links include Define Budget Period Set, Define Closing Rule, and Define Closing Set.
- Budget Reports:** Run budget reports. Sub-links include Activity Log, Associated Budgets Report, and Budgets/Actuals Reconciliation.
- Third Party Transactions:** View and budget-check generic third-party and payroll transactions. Sub-links include Generic Transaction Entry, Budget Check Generic Trans, and Budget Check HR Payroll.
- Review Budget Check Exceptions:** Review budget-check exceptions. Sub-links include Purchasing and Cost Management, Travel and Expenses, and Accounts Payable.
- Archiving Tables:** Archive Commitment Control ledger, journal, and activity data. Sub-links include Maintain Ledger Criteria, Request Archive Processing, and Review Archive Log.

A left-hand navigation menu is visible, with "Budget Journals" selected under the "Commitment Control" section. The browser's taskbar at the bottom shows the Start button and the active window titled "Base Navigation Page..."

LSU Health Care Services Division

PeopleSoft 8.8

Posting Organization Budget Journals

Select Enter Budget Journals

PS Desktop - MetaFrame Presentation Server Client

Base Navigation Page - Microsoft Internet Explorer

File Edit View Favorites Tools Help

Address: https://ps8fsrcb.lsuhscc.edu/psp/fssnd/EMPLOYEE/ERP/s/WEBLIB_PTPP_SC.HOMEPAGE.FieldFormula.IScript_AppHP?pt_fname=EPKK_BUDGET_JOURNALS&FolderPath=POR1

FSSND 8.48
PSWEBDEV11

Home Worklist Add to Favorites Sign out

Menu

- Budget Journals
 - Enter Budget Journals
 - Enter Budget Transfer Journals
 - Mass Delete Budget Journals
 - Import Budget Journals
- Post Control Budget Journals
- Review Budget Activities
- Close Budget
- Budget Reports
- Third Party Transactions
- Review Budget Check Exceptions
- Archiving Tables
- Customers
- Customer Contracts
- General Ledger
- Grants
- Project Costing
- PeopleTools
- Proposal Management
- Reporting Tools
- Employee Self-Service
- Manager Self-Service
- Accounts Payable
- Asset Management
- Inventory
- Items
- Purchasing
- Vendors
- Supplier Contracts
- Products
- Promotions

Main Menu > Commitment Control >

Budget Journals

Access Commitment Control budget journals.

- Enter Budget Journals**
Create and update budget journals.
- Enter Budget Transfer**
Enter information related to transferring budgets.
- Mass Delete Budget Journals**
Request process to delete unposted budget journals.
- Import Budget Journals**
Request the import of budget journals from a flat file.

https://ps8fsrcb.lsuhscc.edu/psp/fssnd/EMPLOYEE/ERP/c/MANAGE_COMMITMENT_CONTROL.KK_BUDGET_ENTRY.GBL?FolderPath=PORTAL_ROOT_OB: Local intranet

Start Base Navigation Page...

LSU Health Care Services Division

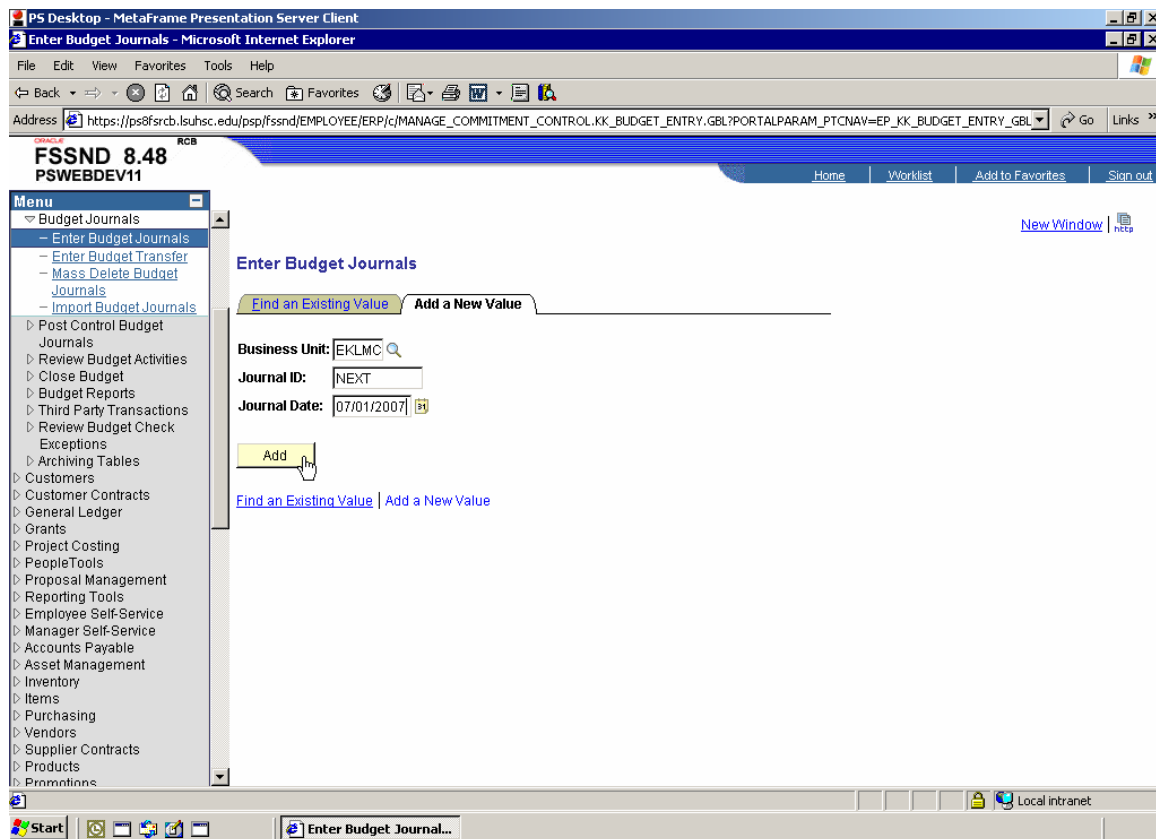
PeopleSoft 8.8

Posting Organization Budget Journals

Add a New Value

Example: Business Unit (EKLMC)
Journal ID (NEXT)
Journal Date (07/01/2007)
(*Always use the first date of the Fiscal Year as the Journal Date)

Click Add



Note: The system will retain the posting date of the journal.

LSU Health Care Services Division PeopleSoft 8.8 Posting Organization Budget Journals

Select Ledger Group of ORG on Budget Header panel

PS Desktop - MetaFrame Presentation Server Client
Enter Budget Journals - Microsoft Internet Explorer
Address: https://ps8frcb.lsuhscc.edu/psp/fssnd/EMPLOYEE/ERP/c/MANAGE_COMMITMENT_CONTROL_KK_BUDGET_ENTRY_GBL
FSSND 8.48 PSWEBDEV11
Menu: Budget Journals, Enter Budget Journals, Enter Budget Transfer, Mass Delete Budget Journals, Import Budget Journals, Post Control Budget Journals, Review Budget Activities, Close Budget, Budget Reports, Third Party Transactions, Review Budget Check Exceptions, Archiving Tables, Customers, Customer Contracts, General Ledger, Grants, Project Costing, PeopleTools, Proposal Management, Reporting Tools, Employee Self-Service, Manager Self-Service, Accounts Payable, Asset Management, Inventory, Items, Purchasing, Vendors, Supplier Contracts, Products, Promotions
Budget Header | Budget Lines | Budget Errors
Unit: EKLMC Journal ID: NEXT Date: 07/01/2007
Ledger Group: ORG Fiscal Year: Period:
Control ChartField: Fund Code Currency: USD
Budget Header Status: None Rate Type: CRRNT
Budget Entry Type: Original (selected) Adjustment
Exchange Rate: 1.00000000
Cur Effdt: 07/01/2007 Budget Type: Expense
Long Description:
Save Notify Add Update/Display
Budget Header | Budget Lines | Budget Errors
Local intranet
Enter Budget Journal...

LSU Health Care Services Division

PeopleSoft 8.8

Posting Organization Budget Journals

- Click on Budget Lines tab
- Select Budget Period (FY_2008)
- Account (500001)
- Fund (111)
- Dept (2018710)
- Program (95001)
- Class (61010)

FSSND 8.48
PSWEBDEV11

Unit: EKLMC Journal ID: NEXT Date: 07/01/2007 Budget Header Status: None
Process: Post Journal Process

Delete	Line	Ledger	Budget Period	Speed Type	Account	Fund	Dept	Program	Class	Set On
<input type="checkbox"/>	1	ORG_BD	FY_2008	Speed Type	500001	111	2018710	95001	61010	Set On

Lines to add: 1

Totals	Total Debits:	Total Credits:
Total Lines:	0.00	0.00
1		

Generate Budget Period Lines

LSU Health Care Services Division

PeopleSoft 8.8

Posting Organization Budget Journals

Enter Amount: Example (-100,000.00)

PS Desktop - MetaFrame Presentation Server Client

Enter Budget Journals - Microsoft Internet Explorer

Address: https://ps8fsrcb.lsuhscc.edu/psp/fssnd/EMPLOYEE/ERP/c/MANAGE_COMMITMENT_CONTROL_KK_BUDGET_ENTRY_GBL?PORTALPARAM_PTCNAV=EP_KK_BUDGET_ENTRY_GBL

FSSND 8.48
PSWEBDEV11

Home | Worklist | Add to Favorites | Sign out

Menu

- Budget Journals
 - Enter Budget Journals
 - Enter Budget Transfer
 - Mass Delete Budget Journals
 - Import Budget Journals
- Post Control Budget Journals
- Review Budget Activities
- Close Budget
- Budget Reports
- Third Party Transactions
- Review Budget Check Exceptions
- Archiving Tables
- Customers
- Customer Contracts
- General Ledger
- Grants
- Project Costing
- PeopleTools
- Proposal Management
- Reporting Tools
- Employee Self-Service
- Manager Self-Service
- Accounts Payable
- Asset Management
- Inventory
- Items
- Purchasing
- Vendors
- Supplier Contracts
- Products
- Promotions

07 Budget Header Status: None

Process: Post Journal Process

Customize | Find | View All | First 1 of 1 Last

Fund	Dept	Program	Class	Set Options	Currency Amount
111	2018710	95001	61010	Set Options	USD -100000.00

From: To: Generate Budget Period Lines

Add Update/Display

Local intranet

Start Enter Budget Journal...

LSU Health Care Services Division

PeopleSoft 8.8

Posting Organization Budget Journals

Enter number of Lines to add: Example (4)

Enter lines on Journal Line Copy Down: Example 2 to 5

Click the + sign

PS Desktop - MetaFrame Presentation Server Client
Enter Budget Journals - Microsoft Internet Explorer

Address: https://ps8fsrcb.lsuhscc.edu/pspp/fssnd/EMPLOYEE/ERP/c/MANAGE_COMMITMENT_CONTROL_KK_BUDGET_ENTRY.GBL?PORTALPARAM_PTCNAV=EP_KK_BUDGET_ENTRY_GBL

FSSND 8.48
PSWEBDEV11

Menu

- Budget Journals
 - Enter Budget Journals
 - Enter Budget Transfer
 - Mass Delete Budget Journals
 - Import Budget Journals
- Post Control Budget Journals
- Review Budget Activities
- Close Budget
- Budget Reports
- Third Party Transactions
- Review Budget Check Exceptions
- Archiving Tables
- Customers
- Customer Contracts
- General Ledger
- Grants
- Project Costing
- PeopleTools
- Proposal Management
- Reporting Tools
- Employee Self-Service
- Manager Self-Service
- Accounts Payable
- Asset Management
- Inventory
- Items
- Purchasing
- Vendors
- Supplier Contracts
- Products
- Promotions

Budget Header | Budget Lines | Budget Errors

Unit: EKLMC Journal ID: NEXT Date: 07/01/2007 Budget Header Status: None
 Process: PostJournal

Lines

Chartfields and Amounts Base Currency Details

Delete	Line	Ledger	Budget Period	Speed Type	Account	Fund	Dept	Program	Class	Set Op
<input type="checkbox"/>	1	ORG_BD	FY_2008	Speed Type	500001	111	2018710	95001	61010	Set Op

Lines to add: From Line: To:

Totals

Total Lines:	Total Debits:	Total Credits:
1	100,000.00	0.00

[Budget Header](#) | [Budget Lines](#) | [Budget Errors](#)

javascript:submitAction_win0(document.win0, 'KK_WRK_PB_INSERT_LN');

Local intranet

Start | Enter Budget Journal...

LSU Health Care Services Division

PeopleSoft 8.8

Posting Organization Budget Journals

Change necessary Accounts and/or Departments and Amounts

Menu

- Budget Journals
 - Enter Budget Journals
 - Enter Budget Transfer
 - Mass Delete Budget Journals
 - Import Budget Journals
- Post Control Budget Journals
- Review Budget Activities
- Close Budget
- Budget Reports
- Third Party Transactions
- Review Budget Check Exceptions
- Archiving Tables
- Customers
- Customer Contracts
- General Ledger
- Grants
- Project Costing
- PeopleTools
- Proposal Management
- Reporting Tools
- Employee Self-Service
- Manager Self-Service
- Accounts Payable
- Asset Management
- Inventory
- Items
- Purchasing
- Vendors
- Supplier Contracts
- Products
- Promotions

Budget Header

Unit: EKLMC Journal ID: NEXT Date: 07/01/2007 Budget Header Status: None

Process: Post Journal **Process**

Lines

Chartfields and Amounts Base Currency Details

Delete	Line	Ledger	Budget Period	Speed Type	Account	Fund	Dept	Program	Class	Set C
<input type="checkbox"/>	1	ORG_BD	FY_2008	Speed Type	500001	111	2018710	95001	61010	Set
<input type="checkbox"/>	2	ORG_BD	FY_2008	Speed Type	500001	111	2018710	95001	61010	Set
<input type="checkbox"/>	3	ORG_BD	FY_2008	Speed Type	500001	111	2018710	95001	61010	Set
<input type="checkbox"/>	4	ORG_BD	FY_2008	Speed Type	500001	111	2018710	95001	61010	Set
<input type="checkbox"/>	5	ORG_BD	FY_2008	Speed Type	500001	111	2018710	95001	61010	Set

Lines to add: 4 **From Line:** 2 **To:** 5 **Generate Budget Period Lines**

Totals

Total Lines:	Total Debits:	Total Credits:
5	500,000.00	0.00

Save **Notify**

Budget Header | Budget Lines | Budget Errors

LSU Health Care Services Division

PeopleSoft 8.8

Posting Organization Budget Journals

Change Departments and Amounts

Example: 2018711 \$25,000
 2018712 \$25,000
 2018713 \$25,000
 2018750 \$25,000

PS Desktop - MetaFrame Presentation Server Client
 Enter Budget Journals - Microsoft Internet Explorer
 Address: https://ps8fsrcb.lsuhscc.edu/psp/fssnd/EMPLOYEE/ERP/c/MANAGE_COMMITMENT_CONTROL_KK_BUDGET_ENTRY.GBL?PORTALPARAM_PTCNAV=EP_KK_BUDGET_ENTRY_GBL

FSSND 8.48
PSWEBDEV11

Home | Worklist | Add to Favorites | Sign out

Menu
 Budget Journals
 - Enter Budget Journals
 - Enter Budget Transfer
 - Mass Delete Budget Journals
 - Import Budget Journals
 Post Control Budget Journals
 Review Budget Activities
 Close Budget
 Budget Reports
 Third Party Transactions
 Review Budget Check Exceptions
 Archiving Tables
 Customers
 Customer Contracts
 General Ledger
 Grants
 Project Costing
 PeopleTools
 Proposal Management
 Reporting Tools
 Employee Self-Service
 Manager Self-Service
 Accounts Payable
 Asset Management
 Inventory
 Items
 Purchasing
 Vendors
 Supplier Contracts
 Products
 Permissions

Budget Header | Budget Lines | Budget Errors

Unit: EKLIC Journal ID: NEXT Date: 07/01/2007 Budget Header Status: None
 Process: Post Journal [Process]

Lines

Delete	Line	Ledger	Budget Period	Speed Type	Account	Fund	Dept	Program	Class	Set C
<input type="checkbox"/>	1	ORG_BD	FY_2008	Speed Type	500001	111	2018710	95001	61010	Set
<input type="checkbox"/>	2	ORG_BD	FY_2008	Speed Type	500001	111	2018711	95001	61010	Set
<input type="checkbox"/>	3	ORG_BD	FY_2008	Speed Type	500001	111	2018712	95001	61010	Set
<input type="checkbox"/>	4	ORG_BD	FY_2008	Speed Type	500001	111	2018713	95001	61010	Set
<input type="checkbox"/>	5	ORG_BD	FY_2008	Speed Type	500001	111	2018750	95001	61010	Set

Lines to add: 4 [Generate Budget Period Lines] From Line: 2 To: 5

Totals
 Total Lines: 5
 Total Debits: 200,000.00
 Total Credits: 75,000.00

Save | Notify

Budget Header | Budget Lines | Budget Errors

LSU Health Care Services Division

PeopleSoft 8.8

Posting Organization Budget Journals

View changes

FSSND 8.48
PSWEBDEV11

Budget Header Status: None

Process: Post Journal Process

Fund	Dept	Program	Class	Set Options	Currency	Amount
111	2018710	95001	61010	Set Options	USD	-100,000.00
111	2018711	95001	61010	Set Options	USD	25,000.00
111	2018712	95001	61010	Set Options	USD	25,000.00
111	2018713	95001	61010	Set Options	USD	25,000.00
111	2018750	95001	61010	Set Options	USD	25000.00

From: 2 To: 5 Generate Budget Period Lines

Buttons: Add, Update/Display

LSU Health Care Services Division

PeopleSoft 8.8

Posting Organization Budget Journals

Click Save

FSSND 8.48 PSWEBDEV11

Unit: ELMC Journal ID: NEXT Date: 07/01/2007 Budget Header Status: None
Process: Post Journal [Process]

Delete	Line	Ledger	Budget Period	Speed Type	Account	Fund	Dept	Program	Class	Set C
<input type="checkbox"/>	1	ORG_BD	FY_2008	Speed Type	500001	111	2018710	95001	61010	Set
<input type="checkbox"/>	2	ORG_BD	FY_2008	Speed Type	500001	111	2018711	95001	61010	Set
<input type="checkbox"/>	3	ORG_BD	FY_2008	Speed Type	500001	111	2018712	95001	61010	Set
<input type="checkbox"/>	4	ORG_BD	FY_2008	Speed Type	500001	111	2018713	95001	61010	Set
<input type="checkbox"/>	5	ORG_BD	FY_2008	Speed Type	500001	111	2018750	95001	61010	Set

Lines to add: 4 [+] [-] [Refresh] Journal Line Copy Down From Line: 2 To: 5 [Generate Budget Period Lines]

Totals		
Total Lines:	Total Debits:	Total Credits:
5	200,000.00	75,000.00

[Save] [Notify]

LSU Health Care Services Division

PeopleSoft 8.8

Posting Organization Budget Journals

Select Post Journal
Click the Process button

PS Desktop - MetaFrame Presentation Server Client
Enter Budget Journals - Microsoft Internet Explorer

Address: https://ps8fsrcb.lsuhscc.edu/psp/fssnd/EMPLOYEE/ERP/c/MANAGE_COMMITMENT_CONTROL_KK_BUDGET_ENTRY.GBL?PORTALPARAM_PTCNAV=EP_KK_BUDGET_ENTRY_GBL

FSSND 8.48
PSWEBDEV11

Home | Worklist | Add to Favorites | Sign out

Menu

- Budget Journals
 - Enter Budget Journals
 - Enter Budget Transfer
 - Mass Delete Budget Journals
 - Import Budget Journals
- Post Control Budget Journals
- Review Budget Activities
- Close Budget
- Budget Reports
- Third Party Transactions
- Review Budget Check Exceptions
- Archiving Tables
- Customers
- Customer Contracts
- General Ledger
- Grants
- Project Costing
- PeopleTools
- Proposal Management
- Reporting Tools
- Employee Self-Service
- Manager Self-Service
- Accounts Payable
- Asset Management
- Inventory
- Items
- Purchasing
- Vendors
- Supplier Contracts
- Products
- Prerequisites

Budget Header | **Budget Lines** | **Budget Errors**

Unit: ELMC Journal ID: 0000379432 Date: 07/01/2007 Budget Header Status: None
 Process: **Post Journal** **Process**

Lines

Chartfields and Amounts | Base Currency Details

Delete	Line	Ledger	Budget Period	Speed Type	Account	Fund	Dept	Program	Class	Set C
<input type="checkbox"/>	1	ORG_BD	FY_2008	Speed Type	500001	111	2018710	95001	61010	Set
<input type="checkbox"/>	2	ORG_BD	FY_2008	Speed Type	500001	111	2018711	95001	61010	Set
<input type="checkbox"/>	3	ORG_BD	FY_2008	Speed Type	500001	111	2018712	95001	61010	Set
<input type="checkbox"/>	4	ORG_BD	FY_2008	Speed Type	500001	111	2018713	95001	61010	Set
<input type="checkbox"/>	5	ORG_BD	FY_2008	Speed Type	500001	111	2018750	95001	61010	Set

Lines to add: 1 From Line: To:

Totals

Total Lines:	Total Debits:	Total Credits:
5	100,000.00	100,000.00

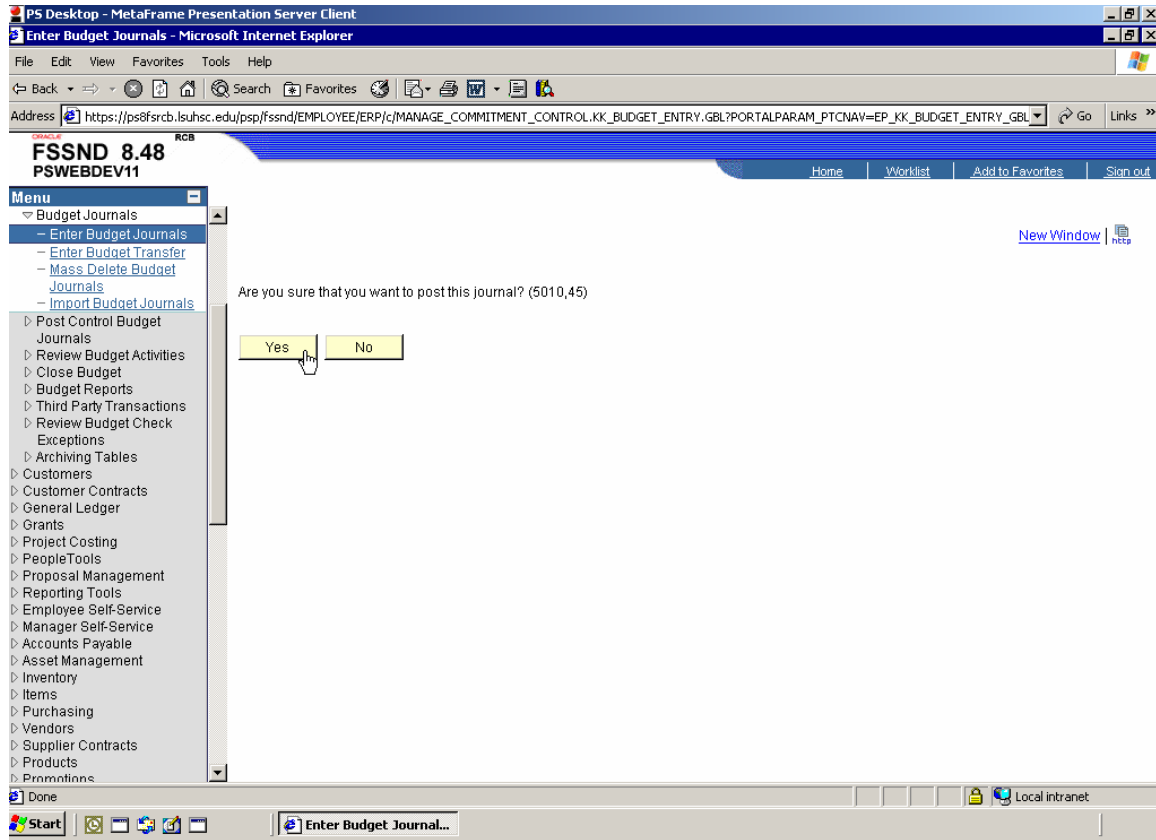
Budget Header | Budget Lines | Budget Errors

Local intranet

Start | Enter Budget Journal...

LSU Health Care Services Division PeopleSoft 8.8 Posting Organization Budget Journals

Click Yes to post the journal



LSU Health Care Services Division

PeopleSoft 8.8

Posting Organization Budget Journals

Verify journal status is posted

FSSND 8.48
PSWEBDEV11

Home | Worklist | Add to Favorites | Sign out

Menu

- Budget Journals
 - Enter Budget Journals
 - Enter Budget Transfer
 - Mass Delete Budget Journals
 - Import Budget Journals
- Post Control Budget Journals
- Review Budget Activities
- Close Budget
- Budget Reports
- Third Party Transactions
- Review Budget Check Exceptions
- Archiving Tables
- Customers
- Customer Contracts
- General Ledger
- Grants
- Project Costing
- PeopleTools
- Proposal Management
- Reporting Tools
- Employee Self-Service
- Manager Self-Service
- Accounts Payable
- Asset Management
- Inventory
- Items
- Purchasing
- Vendors
- Supplier Contracts
- Products
- Promotions

Budget Header | Budget Lines | Budget Errors

Unit: EKLMC Journal ID: 0000379432 Date: 07/01/2007 Budget Header Status: Posted

Process: Post Journal [Process](#)

Lines

Chartfields and Amounts [Base Currency Details](#) [PDF](#)

Line	Ledger	Budget Period	Speed Type	Account	Fund	Dept	Program	Class	Set Options	Entry E
1	ORG_BD	FY_2008	Speed Type	500001	111	2018710	95001	61010	Set Options	
2	ORG_BD	FY_2008	Speed Type	500001	111	2018711	95001	61010	Set Options	
3	ORG_BD	FY_2008	Speed Type	500001	111	2018712	95001	61010	Set Options	
4	ORG_BD	FY_2008	Speed Type	500001	111	2018713	95001	61010	Set Options	
5	ORG_BD	FY_2008	Speed Type	500001	111	2018750	95001	61010	Set Options	

From Line: To: [Generate Budget Period Lines](#)

Totals

Total Lines:	Total Debits:	Total Credits:
5	100,000.00	100,000.00

[Save](#) [Return to Search](#) [Notify](#)

[Budget Header](#) | [Budget Lines](#) | [Budget Errors](#)

Local intranet

Enter Budget Journal...